

## AX Pro Series

- Native 16:9, pixel to pixel FHD/4K
- HDR capable
- Flip chip IMD 4-in-1 packaging technology (AX1.2 Pro)
- Recommended for xR stage, broadcasting studio



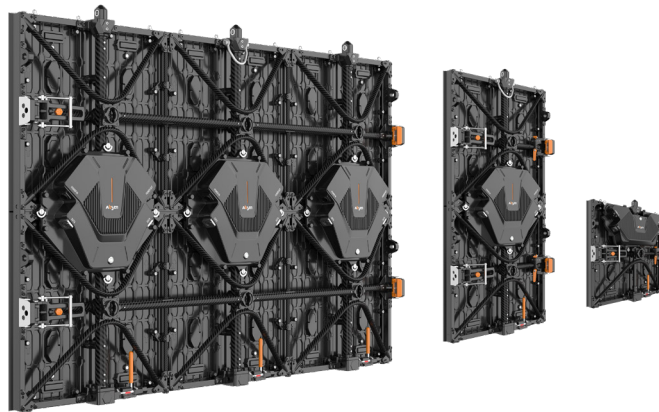
AX Pro	AX1.2 Pro		AX1.5 Pro	
Control system	Brompton	NovaStar	Brompton	NovaStar
LED type	IMD	IMD	IMD	IMD
Pixel pitch (mm)	1.27	1.27	1.58	1.58
Panel dimensions (WxHxD, mm)	610x343x80 (24.02x13.50x3.15")			
Weight per panel (kg)	9.2 (20.28lbs)			
Panel resolution (HxV)	480x270	480x270	384x216	384x216
Brightness (nit)	1500	1500	1000	1000
Refresh rate (Hz)	7680	7680	7680	7680
Viewing angle (H/V,°)	160/160	160/160	160/140	160/140
IP rating (Front/ rear)	IP40/IP21			
Curving capabilities	0°, 2.5° concave			

## VN Series

- Module-on-frame design
- Large-sized lock system
- Integrated wind-bracing system
- Dolly system for efficient transportation



reddot winner 2020

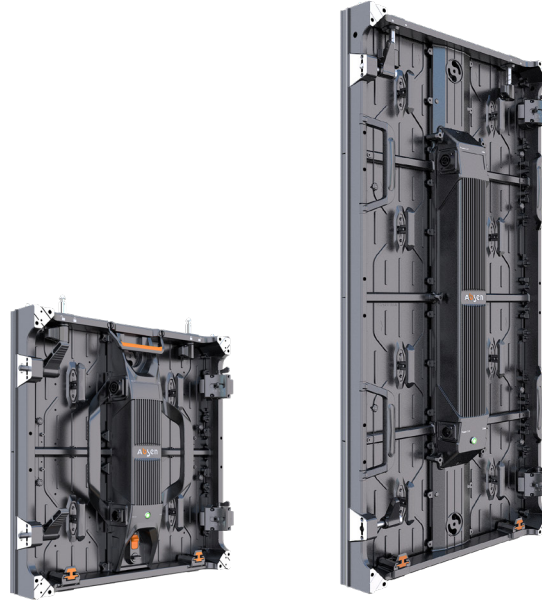


VN	VN3.9 Pro		VN4.8 Pro		VN8.3	
Control system	Brompton	NovaStar	Brompton	NovaStar	Brompton	NovaStar
LED type	Black SMD1921	Black SMD1921	Black SMD1921	Black SMD1921	SMD1921	SMD1921
Pixel pitch (mm)	3.9	3.9	4.8	4.8	8.3	8.3
Panel dimensions (WxHxD, mm)	500x500x113 (19.69x19.69x4.45")/ 500x1000x113 (19.69x39.37x4.45")/ 1500x1000x113 (59.06x39.37x4.45")				500x1000x113 (19.69x39.37x4.45")/ 1500x1000x113 (59.06x39.37x4.45")	
Weight per panel (kg)	9.5 (20.94lbs)/ 17 (37.48lbs)/ 43 (94.80lbs)				17 (37.48lbs)/ 43 (94.80lbs)	
Panel resolution (HxV)	128x128/ 128x256/ 384x256		104x104/ 104x208/ 312x208		60x120/ 180x120	
Brightness (nit)	4500	4500	4500	4500	5000	5000
Refresh rate (Hz)	7680	7680	7680	3840	7680	3840
Viewing angle (H/V,°)	160/140	160/140	120/80	120/80	120/85	120/85
IP rating (Front/ rear)	IP65/IP54					
Curving capabilities	-10° convex to +10° concave (in units of 5°; only for 500x500x113mm and 500x1000x113mm panels)					

## Polaris Series

- Mainstream indoor & outdoor rental solution
- Indoor 1.9~3.9mm, outdoor 3.9~4.8mm
- Auto-lock and auto-eject systems
- Modular design for front/ rear maintenance

**INAVATION AWARDS**  
TECHNOLOGY WINNER **2019**

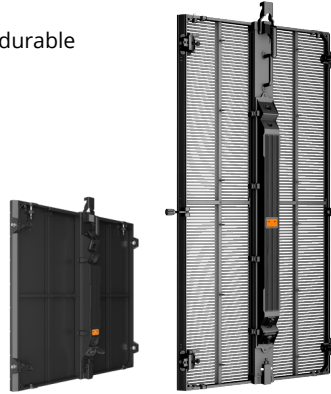


PL V10	PL1.9 Pro V10		PL2.5 Pro V10			PL2.9 V10	PL3.9 V10	PL3.9 Pro V10	PL4.8 Pro V10	PL2.5 Pro V10 -Cube	PL2.9 V10 -Cube	PL2.9 Pro V2
Control system	Brompton	NovaStar	Brompton		NovaStar	NovaStar						
LED type	IMD		Black SMD1515			Black SMD2121		Black SMD1921		Black SMD1515	Black SMD2121	Black SMD1515
Pixel pitch (mm)	1.953	1.953	2.5	2.5	2.5	2.97	3.9	3.9	4.8	2.5	2.97	2.97
Panel dimensions (WxHxD, mm)	500x500x88 (19.69x19.69x3.46")					500x500x88 (19.69x19.69x3.46")/ 500x1000x88 (19.69x39.37x3.46")				500x500x88 (19.69x19.69x3.46")		500x500x78 (19.69x19.69x3.07")/ 500x1000x78 (19.69x39.37x3.07")
Weight per panel (kg)	9 (19.84lbs)		8.8 (19.40lbs)		8.6 (18.96lbs)	8 (17.64lbs)/ 12.6 (27.78lbs)	7.7 (16.98lbs)/ 12.6 (27.78lbs)	8.4 (18.52lbs)/ 13.7 (30.20lbs)	8.1 (17.86)/ 13.7 (30.20lbs)	8.3 (18.30lbs)	7.7 (16.98lbs)	8 (17.64lbs)/ 12.5 (27.56lbs)
Panel resolution (HxV)	256x256		200x200			168x168/168x336	128x128/128x256	128x128/128x256	104x104/104x208	200x200	168x168	168x168/168x336
Brightness (nit)	1200	1200	1500	1500	1500	1000	1000	4500	4500	1500	1000	3000
Refresh rate (Hz)	3840	3840	7680	3840	3840	3840	3840	3840	3840	3840	3840	3840
Viewing angle (H/V,°)	140/140	140/140	160/140	160/140	160/140	140/140	140/140	140/100	140/80	160/140	140/140	160/160
IP rating (Front/ rear)	IP40/IP21							IP65/IP54		IP40/IP21		IP65/IP54
Curving capabilities	-7.5° convex to +10° concave (in units of 2.5°)											

Note: PL2.9 Pro V2 is a product developed based on the Polaris V2 platform, which can share the hanging bars and stacking systems with the PL V10 version.

## JP Series

- Super lightweight and durable
- High transparency\*



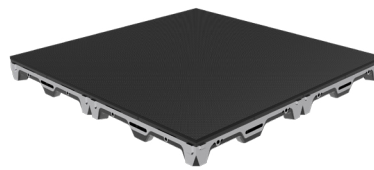
- Curved connection from -15° convex to +15° concave (JP8.33)
- Easy installation and service

JP	JP4.68		JP6.25	JP8.33	JP9.37
Control system	Brompton	NovaStar	NovaStar	NovaStar	NovaStar
LED type	SMD1921	SMD1515	SMD1515	SMD1921	SMD1515
Pixel pitch (mm)	4.68	4.68	6.25	8.33	9.37
Panel dimensions (WxHxD, mm)	600x600x100 (23.62x23.62x3.94")		600x600x100 (23.62x23.62x3.94")/ 600x1200x100 (23.62x47.24x3.94")	500x500x100 (19.69x19.69x3.94")/ 500x1000x100 (19.69x39.37x3.94")	600x600x100 (23.62x23.62x3.94")/ 600x1200x100 (23.62x47.24x3.94")
Weight per panel (kg)	6.5 (14.33lbs)	5.4 (11.90lbs)	5.5 (12.13lbs)/ 8.3 (18.30lbs)	4.3 (9.48lbs)/ 6.5 (14.33lbs)	4.1 (9.04lbs)/ 7.5 (16.53lbs)
Panel resolution (HxV)	128x128	128x128	96x96/ 96x192	60x60/ 60x120	64x64/ 64x128
Brightness (nit)	4500	3000	4500	5000	3000
Refresh rate (Hz)	3840	3840	3840	3840	3840
Viewing angle (H/V,°)	160/140	160/140	140/120	160/160	160/160
Transparency	/	/	35%	20%	45%
IP rating (front/ rear)	IP20/IP20		IP65/IP54		

\*JP4.68 is not a transparent display but uses the same platform with other products of the JP series.

## MR Series

- 0~20mm height adjustable
- Ultra-high load capacity\*



- Water resistance surface
- Front installation and maintenance

MR	MR2.5		MR4.8 matte		MR4.8 anchor-free matte		MR4.8 glassy	MR4.8 interactive matte	
Control system	Brompton	NovaStar	Brompton	NovaStar	Brompton	NovaStar	NovaStar	NovaStar	
LED type	SMD1515	SMD1515	SMD1921	SMD1921	SMD1921	SMD1921	SMD1921	SMD1921	
Pixel pitch (mm)	2.5	2.5	4.8	4.8	4.8	4.8	4.8	4.8	
Panel dimensions (WxHxD, mm)	500x500x80 (19.69x19.69x3.15")		500x500x85 (19.69x19.69x3.35")				500x500x92 (19.69x19.69x3.62")	500x500x85 (19.69x19.69x3.35")	
Weight per panel (kg)	12 (26.46lbs)						16 (35.27lbs)	12 (26.46lbs)	
Panel resolution (HxV)	200x200	200x200	104x104	104x104	104x104	104x104	104x104	104x104	
Brightness (nit)	1000	1000	1500	1000	1500	1500	1000	1000	
Refresh rate (Hz)	3840	3840	7680	3840	7680	7680	3840	3840	
Viewing angle (H/V,°)	160/160	160/160	140/140	140/140	140/140	140/140	140/140	140/140	
Maximum load capacity (kg/m <sup>2</sup> )	1000			2500					
IP rating (front/ rear)	IP65/IP54								

\*The MR2.5 is not available for car show. The anchor-free matte version need to be used with subframe.