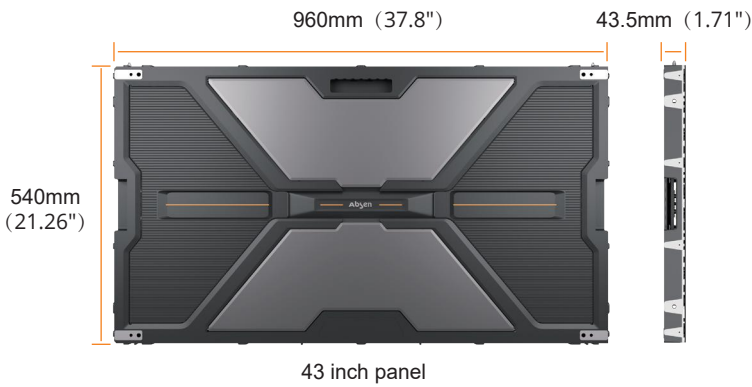


NX Series V1X

Unparalleled visual experience.



Ultra-thin and Lightweight



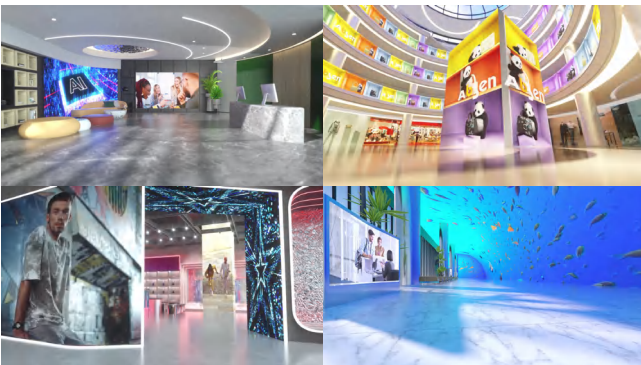
16:9
Aspect ratio

43.5mm 1.71"
Ultra-thin design

20kg/m² 44lbs/m²
Ultra-lightweight

Items	NX1.5	NX1.8	NX2.5
Panel resolution	640*360	512*288	384*216
4K display	6*6pcs	8*8pcs	10*10pcs
8K display	12*12pcs	15*15pcs	20*20pcs

Ultimate Display Performance



• Corporate, mall, chain store, transportation hub, etc

- 800nits brightness version
- A5C+ color calibration technology
- High grayscale at low brightness
- Up to 7680Hz high refresh rate
- Remote monitoring and centralized management
- TÜV Rheinland low blue light certification

◀ N-in-1 Small Panel

Flexible N-in-1 small panel, enhancing project dimension compatibility



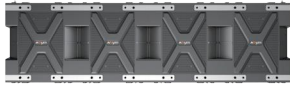
2-in-1 small panel



3-in-1 small panel



4-in-1 small panel



Horizontal 4-in-1 small panel



• Concave splicing with small panels



• 90° seamless L-shape splicing

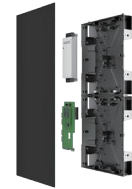


• Cube

◀ Installation and Maintenance



Rear maintenance of large panel



Front maintenance of small panel

- Rotary clamshell design for easy rear maintenance
- Front/rear maintenance of module, PSU, receiving card, etc.
- Supports hanging, wall-mounting and stacking installation
- Precise floating connector for bright and dark lines adjustment
- X/Y/Z axis alignment for flatness adjustment between panels

◀ Product Specification

Parameters	NX1.5	NX1.8	NX2.5
LED type	Black SMD1212	Black SMD1515	Black SMD2121
Pixel pitch (mm)	1.5	1.875	2.5
Panel dimensions (W*H*D, mm)	960x540x43.5(37.80x21.26x1.71") / 960x270x43.5(37.80x10.63x1.71") / 240x540x43.5(10.63x21.26x1.71") / 240x810x43.5(10.63x31.89x1.71") / 240x1080x43.5(10.63x42.52x1.71")		
Brightness (nit)	800	800	800
Refresh rate (Hz)	7680	7680	7680
Grayscale (bit)	16	16	16
Contrast ratio	4000:1	4000:1	4000:1
Color temperature (K)	6500	6500	6500
Viewing angle (H/V, °)	160/160	160/160	160/160
Drive mode	1/45	1/36	1/27
AC operating voltage (V)	100~240	100~240	100~240
Power consumption (max./avg., W/m ²)	480/160	450/150	420/140
IP Rating (Front/Rear)	IP40/IP21	IP40/IP21	IP40/IP21
Certification	FCC, ETL, CE, RoHS, CCC, TUV		

Note:

1. Provides optional dual backup version to ensure continuous transmission of signal and power supply.
2. Small panel adopts rotary clamshell design as well and support rear maintenance of PSU and receiving card.
3. Z-axis alignment function is only available for ground stacking installation.

Absen

www.usabsen.com
info@usabsen.com

HQ Office

7120 Lake Ellenor Drive
Orlando, FL 32809
407.203.8870

Service Center & Warehouse

7307 Presidents Drive
Orlando, FL 32809
866-872-2736

- Twitter: @Absen_Inc
- Facebook: @AbsenInc
- LinkedIn: @AbsenInc
- IG: @absen_inc